



VEFLOX

PIPES | FITTINGS | FLANGES



- Stainless Steel
- Alloy Steel
- Mild Steel
- Carbon Steel
- High Nickel Alloys

**“QUALITY OF
OUR PRODUCTS
WILL SPEAK QUALITY
OF OUR RELATION”**

Company Profile

Established in 1982, **VEFLOX** as a leading Manufacturer Stockist and Suppliers of Various Ferrous & Non-Ferrous Metal has been providing superior solutions for customers across various industries during the past 28 years. With substantial investment in man & machine and product / production innovation under process, we can offer complet range of products in the shape of Pipes, Tubes, Pipe Fittings, Flanges, in wide range of sizes and more material grades including Nickel Alloy, Duplex, Super Duplex & Titanium.

We believe that commitment and reliability in dealings with customers are primally prerequisites for successful and sustained business relationship - Hence we delegate responsibility to every members from management, Managers to workers to achieve heighest performance in quality & Service resulting in Total Customers satisfaction.

As a testimony to our relentless efforts in satisfying the client's need, we have been retained by various clients across industries like Refineries & Petrochemicals, Oil & Gas, Offshore, Chemicals & Fertilizers, Cement, Engineering, Construction, Sugar, Nuclear & Thermal, Paper & Pulp etc.

We hope this Catalogue presented in a convenient and easily understandable format will help or serve as a valuable refernce material which will make buying decision much easier.

We shall endeavor to provide value for money by maintaining consistent Quality & Reliability.



Quality Policy

Quality is our mission, the quality policy is our main tool in achieving it. Utmost Satisfaction of client's expectation. Innovative, Cost and time effective services. Consistent and Continuous quality improvement.

Fulfillments of defined quality objective targets. Develop the organization as an International for excellence Continuous evaluation of market to explore challenging areas of operation

The group is detemined to improve productivity and focus continuously on innovation and up gradation of its products and people.

Testing Facility Available

- Chemical Analysis
- Hydrostatic
- Radiography
- Mechanical Test
- Corrsion Test
- Miscellaneous Test
- Metallography Test
- Ultrasonic Test

CERTIFICATE





STAINLESS STEEL : ASTM / ASME SA 312 GR, TP 304, 304L, 304H, 309S, 309H, 310S, 310H, 316, 316TI, 316H, 316LN, 317, 317L, 321, 321H, 347, 347H, 904L, ASTM / ASME SA 358 CL 1 % CL 3 GR. 304, 304L, 304H, 309S, 309H, 310S, 310H, 316, 316H, 321, 321H, 47.

DUPLEX STEEL : ASTM / ASME SA 790 UNS NO

CARBON STEEL : ASTM ASME A 53 GR. A & B, ASTM A 106 GR.

A, B & C. API 5L GR. B, IBR & NON-IBR

API 5L X 42, X 46, X 52, X 60, X 65 & X 70, ASTM / ASME A 691 GR

A, B & C

ALLOY STEEL : ASTM / ASME A 335 GR P1, P5, P9, P11, P12, P22, P23, P91, ASTM / ASME A 691 GR 1 CR, 11/4 CR, 21/ 4CR.

IBR & NON-IBR

SIZE : Up to 24" NB. (Seamless), up to 48" (Welded)

WALL THICKNESS : Sch. 5S to Sch. XXS

Spiral Submerged Arc Welded Pipes are available in API and other International Standards and also in commercial quality for application ranging from transportation of **OIL, GAS, WATER, SLURRY & SEWAGE** etc to Projects.

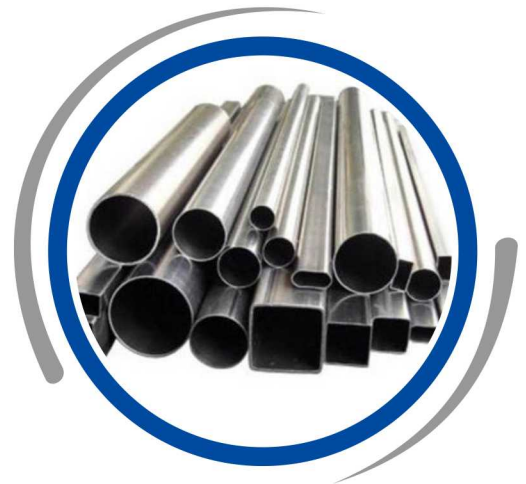
Grade : API 5L Gr. B / ASTM A 672 / 671 / 691

Outside Diameter : 16" to 200"

Wall Thickness : 5mm to 90mm

Length : 4 meter to 12 Meter

Range - High Quality SAW Pipes in large diameters i.e. in the range of 16" to 200" diameters with IBR & Non-IBR





BUTTWELD FITTING

Specifications:

Stainless Steel : ASTM A403 WP 304/ 304L/ 304H/316/ 316L/ 317/ 317L/ 321/ 310/ 347/904L etc.

Carbon Steel : ASTM A234 WPB/A420 WPL3/A420 WPL6/ MSS-SP-75 WPHY 42/46/52 /56/60/65/70/A53GR. B/A106 GR.B / ASM 192 / A179, IBR & NON-IBR

Alloy Steel : ASTM A234 WP1/ WP5/ WP9/ WP11/ WP22/ WP91, IBR & NON-IBR

Others : Monel, Nickel, Inconel, Hastalloy, Copper, Brass, Bronze, Titanium, Tantalum, Bismuth, Aluminium, High Speed Steel, Zinc, Lead, etc.

Size : 1/4" NB TO 32" NB. (Seamless & Welded)

Wall Thickness : Sch. 5S To Sch. XXS.

Type of Butt weld fittings: Tee, Elbow, Reducing Tee, Coupling, Long & Short Stub Bend, Reducer, Return Bends, Plug and Union, Cap, Collar, Cross, etc.



FLANGES

Materials Grades Available:

Stainless Steel: ASTM A182 F304/ 304L/ 304H/ 316/ 316L/ 317/ 317L/ 321/ 310/ 347/ 904L etc.

Carbon Steel: ASTM A105/A694F42/46/52/56/60/65/70/ A350 LF3/A350 LF2, IBR & NON-IBR

Alloy Steel: ASTM A182 F1/ F5/ F9/ F11/ F22/ F91, 17-4PH, 15-4PH, IBR & NON-IBR

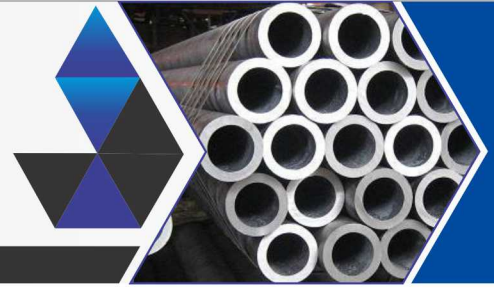
Others: Monel, Nickel, Inconel, Hastalloy, Copper, Brass, Bronze, Titanium, Tantalum, Bismuth, Aluminium, High Speed Steel, Zinc, Lead, etc.

Types: Our range of include PN , Plate Blank Flanges, Screwed Bars , Spectacle, Blind, Lapped, Reducing , Welded Socketweld , SORF , Threaded, Weldneck, Slipon, Blind, Socket Weld, Lap Joint, Spectacles, Ring Joint, Oriface, Long Weldneck, Deck Flange, RTJ Flange

Size: 1/2" NB TO 24" NB.

Class: 150#, 300#, 400#, 600#, 900#, 1500# & 2500#.





MATERIAL SPECIFICATION FOR OF STAINLESS STEEL, ALLOY STEEL, CARBON STEEL & MILD STEEL. PIPE & TUBES ASTM / API / BS / DIN / IS

PIPE SPECIFICATION	CHEMICAL PROPERTIES					MECHANICAL PROPERTIES				OTHERS			
	C%	Mn%	P% (Max)	S% (Max)	Si%	Cr%	Ni%	Mo%	U.T.S. (Mpa)	Y.S. (Mpa)	ELONG. (Min)	L	T
ASTMA 312 Gr. TP 304	0.080 Max	2.00 Max	0.045	0.030	1.00 Max	18.0-20.0	8.0-11.0	-	515	205	35		
ASTMA 312 Gr. TP 304L	0.035 Max	2.00 Max	0.045	0.030	1.00 Max	18.0-20.0	8.0-13.0	-	485	170	35	25	-
ASTMA 312 Gr. TP 304H	0.04-0.10	2.00 Max	0.045	0.030	1.00 Max	18.0-20.0	8.0-11.0	-	515	205	35	25	-
ASTMA 312 Gr. TP 304LN	0.035 Max	2.00 Max	0.045	0.030	1.00 Max	18.0-20.0	8.0-12.0	-	515	205	35	25	N%=0.10-0.16
ASTMA 312 Gr. TP 309S	0.080 Max	2.00 Max	0.045	0.030	1.00 Max	22.0-24.0	12.0-15.0	0.75 Max	515	205	35	25	-
ASTMA 312 Gr. TP 310S	0.080 Max	2.00 Max	0.045	0.030	1.00 Max	24.0-26.0	19.0-22.0	0.75 Max	515	205	35	25	-
ASTMA 312 Gr. TP 316	0.080 Max	2.00 Max	0.045	0.030	1.00 Max	16.0-18.0	11.0-14.0	2.00-3.00	515	205	35	25	-
ASTMA 312 Gr. TP 316L	0.035 Max	2.00 Max	0.045	0.030	1.00 Max	16.0-18.0	10.0-14.0	2.00-3.00	485	170	35	25	-
ASTMA 312 Gr. TP 316H	0.04-0.10	2.00 Max	0.045	0.030	1.00 Max	16.0-18.0	11.0-14.0	2.00-3.00	515	205	35	25	-
ASTMA 312 Gr. TP 316LN	0.035 Max	2.00 Max	0.045	0.030	1.00 Max	16.0-18.0	11.0-14.0	2.00-3.00	515	205	35	25	N%=0.10-0.16
ASTMA 312 Gr. TP 317L	0.080 Max	2.00 Max	0.045	0.030	1.00 Max	18.0-20.0	11.0-15.0	3.00-4.00	515	205	35	25	-
ASTMA 312 Gr. TP 321H	0.080 Max	2.00 Max	0.045	0.030	1.00 Max	17.0-19.0	9.0-12.0	-	515	205	35	25	TI%=(5XC)-0.70
ASTMA 312 Gr. TP 321H	0.04-0.10	2.00 Max	0.045	0.030	1.00 Max	17.0-19.0	9.0-12.0	-	515	205	35	25	TI%=(4XC)-0.60
ASTMA 312 Gr. TP 347	0.080 Max	2.00 Max	0.045	0.030	1.00 Max	17.0-19.0	9.0-13.0	-	515	205	35	25	Cb%=(10XC)-1.00
ASTMA 312 Gr. TP 347H	0.04-0.10	2.00 Max	0.045	0.030	1.00 Max	17.0-19.0	9.0-13.0	-	515	205	35	25	Cb%=(8XC)-1.10
ASTMA 358 Gr. TP 304L	0.035 Max	2.00 Max	0.045	0.030	0.75 Max	18.0-20.0	8.0-10.5	-	515	205	40	40	N%=0.10 Max, HRB=92 Max
ASTMA 358 Gr. TP 309S	0.080 Max	2.00 Max	0.045	0.030	0.75 Max	18.0-20.0	8.0-12.0	-	485	170	40	40	N%=0.10 Max, HRB=92 Max
ASTMA 358 Gr. TP 310S	0.080 Max	2.00 Max	0.045	0.030	1.50 Max	22.0-24.0	12.0-15.0	-	515	205	40	40	HRB=95 Max
ASTMA 358 Gr. TP 316	0.080 Max	2.00 Max	0.045	0.030	0.75 Max	16.0-18.0	10.0-14.0	2.00-3.00	515	205	40	40	HRB=95 Max
ASTMA 358 Gr. TP 316L	0.035 Max	2.00 Max	0.045	0.030	0.75 Max	16.0-18.0	10.0-14.0	2.00-3.00	485	170	40	40	N%=0.10 Max, HRB=95 Max
ASTMA 358 Gr. TP 321	0.080 Max	2.00 Max	0.045	0.030	0.75 Max	17.0-19.0	9.0-12.0	-	515	205	40	40	N%=0.10 Max, TI%=(5XC)-N=0.70, HRB=95 Max
ASTMA 358 Gr. TP 347	0.080 Max	2.00 Max	0.045	0.030	0.75 Max	17.0-19.0	9.0-13.0	-	515	205	40	40	Cb%=(10XC)-1.00, HRB=92 Max
ASTMA 106 Gr. A	0.25 Max	0.27-0.93	0.035	0.035	0.10 Min	0.40 Max	0.40 Max	0.15 Max	330	205	35	25	Cu%:0.40 Max, Va%: 0.08
ASTMA 106 Gr. B	0.30 Max	0.29-1.06	0.035	0.035	0.10 Min	0.40 Max	0.40 Max	0.15 Max	415	240	30	16.5	Cu%:0.40 Max, Va%: 0.08
ASTMA 106 Gr. C	0.35 Max	0.29-1.06	0.035	0.035	0.10 Min	0.40 Max	0.40 Max	0.15 Max	485	275	30	16.5	Cu%:0.40 Max, Va%: 0.08
ASTMA 53 Gr. A	0.25 Max	0.95 Max	0.050	0.045	-	0.40 Max	0.40 Max	0.15 Max	330	205	30	16.5	Cu%:0.40 Max, Va%: 0.08
ASTMA 53 Gr. B	0.30 Max	1.20 Max	0.050	0.045	-	0.40 Max	0.40 Max	0.15 Max	415	240	30	16.5	Cu%:0.40 Max, Va%: 0.08
ASTMA 333 Gr. 1	0.30 Max	0.40-1.06	0.025	0.025	0.10 Min	-	-	-	380	205	35	25	Impact Test= -45 °C, J=18 Min, HRB=85 Max
ASTMA 333 Gr. 6	0.30 Max	0.29-1.06	0.025	0.025	0.10 Min	-	-	-	415	240	30	16.5	Impact Test= -45 °C, J=18 Min, HRB=85 Max
ASTMA 335 Gr. P1	0.10-0.20	0.30-0.80	0.025	0.025	0.10-0.50	-	-	0.44-0.65	380	205	30	20	-
ASTMA 335 Gr. P2	0.10-0.20	0.30-0.61	0.025	0.025	0.10-0.30	0.50-0.81	-	0.44-0.65	380	205	30	20	-
ASTMA 335 Gr. P5	0.15 Max	0.30-0.60	0.025	0.025	0.50 Max	4.00-6.00	-	0.45-0.65	415	205	30	20	-
ASTMA 335 Gr. P9	0.15 Max	0.30-0.60	0.025	0.025	0.25-1.00	8.00-10.00	-	0.90-1.10	415	205	30	20	-
ASTMA 335 Gr. P11	0.05-0.15	0.30-0.60	0.025	0.025	0.50-1.00	1.00-1.50	-	0.44-0.65	415	205	30	20	-
ASTMA 335 Gr. P12	0.05-0.15	0.30-0.61	0.025	0.025	0.80-1.25	0.80-1.25	-	0.44-0.65	415	220	30	20	-
ASTMA 335 Gr. P22	0.05-0.15	0.30-0.60	0.025	0.025	0.50 Max	1.90-2.60	-	0.87-1.13	415	205	30	20	-
ASTMA 213 Gr. T2	0.08-0.12	0.30-0.60	0.020	0.010	0.20-0.50	8.00-9.50	0.40 Max	0.85-1.05	620	440	20	-	V%=(18-0.25, N%=(0.03-0.07), A%=(0.02 Max, C%=(0.06-0.10
ASTMA 213 Gr. T5	0.15 Max	0.30-0.60	0.025	0.025	0.10-0.30	0.50-0.81	-	0.44-0.65	415	205	30	30	HRB=85 Max
ASTMA 213 Gr. T11	0.05-0.15	0.30-0.60	0.025	0.025	0.50-1.00	1.00-1.50	-	0.44-0.65	415	205	30	30	HRB=85 Max
ASTMA 213 Gr. T12	0.05-0.15	0.30-0.61	0.025	0.025	0.50 Max	0.80-1.25	-	0.44-0.65	415	220	30	30	HRB=85 Max
ASTMA 213 Gr. T22	0.05-0.15	0.30-0.60	0.025	0.025	0.50 Max	1.90-2.60	-	0.87-1.13	415	205	30	30	HRB=85 Max
ASTMA 179	0.06-0.18	0.27-0.63	0.035	0.035	-	-	-	-	325	180	35	35	HRB=72 Max
ASTMA 210 Gr. A1	0.27 Max	0.93 Max	0.035	0.035	0.10 Min	-	-	-	415	255	30	30	HRB=79 Max

CARBON STEEL, ALLOY STEEL, LOW TEMP,
PIPE AND TUBES SPECIFICATION



PIPE DIMENSIONS AND WEIGHTS

NOMINAL PIPE SIZE		SCHEDULE DESIGNATIONS		WALL THICKNESS		WEIGHT		ID		
INCH	OD	ASME		INCH	MM	LBS/FOOT	KG/METER	INCH	MM	
MM	MM									
1/8	0.405	10	10S	0.049	1.24	0.19	0.28	0.307	7.82	
6	10.3	STD	40	40S	0.068	1.73	0.24	0.37	6.84	
		XS	80	80S	0.095	2.41	0.31	0.47	5.84	
1/4	0.540	10	10S	0.065	1.65	0.33	0.49	0.410	10.40	
8	13.7	STD	40	40S	0.088	2.24	0.43	0.63	9.22	
		XS	80	80S	0.119	3.02	0.54	0.80	7.66	
3/8	0.675	10	10S	0.065	1.65	0.42	0.63	0.545	13.80	
10	17.1	STD	40	40S	0.091	2.31	0.57	0.84	12.48	
		XS	80	80S	0.126	3.20	0.74	1.10	10.70	
1/2	0.840	5	5S	0.065	1.65	0.54	0.80	0.710	18.00	
15	21.3	10	10S	0.083	2.11	0.67	1.00	0.674	17.08	
		STD	40	40S	0.109	2.77	0.85	1.27	15.76	
		XS	80	80S	0.147	3.73	1.09	1.62	13.84	
		160			0.188	4.78	1.31	1.95	11.74	
		XX			0.294	7.47	1.72	2.55	6.36	
3/4	1.050	5	5S	0.065	1.65	0.69	1.03	0.920	23.40	
20	26.7	10	10S	0.083	2.11	0.86	1.28	0.884	22.48	
		STD	40	40S	0.113	2.87	1.13	1.69	20.96	
		XS	80	80S	0.154	3.91	1.48	2.20	18.88	
		160			0.219	5.56	1.95	2.90	15.58	
		XX			0.308	7.82	2.44	3.64	11.06	
1	1.315	5	5S	0.065	1.65	0.87	1.29	1.185	30.10	
25	33.4	10	10S	0.109	2.77	1.41	2.09	1.097	27.86	
		STD	40	40S	0.133	3.38	1.68	2.50	26.64	
		XS	80	80S	0.179	4.55	2.17	3.24	24.30	
		160			0.250	6.35	2.85	4.24	20.70	
		XX			0.358	9.09	3.66	5.45	15.22	
1-1/4	1.660	5	5S	0.065	1.65	1.11	1.65	1.530	38.90	
32	42.2	10	10S	0.109	2.77	1.81	2.69	1.442	36.66	
		STD	40	40S	0.140	3.56	2.27	3.39	35.08	
		XS	80	80S	0.191	4.85	3.00	4.47	32.50	
		160			0.250	6.35	3.77	5.61	29.50	
		XX			0.382	9.70	5.22	7.77	22.80	
1-1/2	1.900	5	5S	0.065	1.65	1.28	1.90	1.770	45.00	
40	48.3	10	10S	0.109	2.77	2.09	3.11	1.682	42.76	
		STD	40	40S	0.145	3.68	2.72	4.05	40.94	
		XS	80	80S	0.200	5.08	3.63	5.41	38.14	
		160			0.281	7.14	4.86	7.25	34.02	
		XX			0.400	10.15	6.41	9.55	28.00	
2	2.375	5	5S	0.065	1.65	1.61	2.39	2.245	57.00	
50	60.3	10	10S	0.109	2.77	2.64	3.93	2.157	54.76	
		STD	40	40S	0.154	3.91	3.66	5.44	52.48	
		XS	80	80S	0.218	5.54	5.03	7.48	49.22	
		160			0.344	8.74	7.47	11.11	42.82	
		XX			0.436	11.07	9.04	13.44	38.16	
2-1/2	2.875	5	5S	0.083	2.11	2.48	3.69	2.709	68.78	
65	73.0	10	10S	0.120	3.05	3.53	5.26	2.635	66.90	
		STD	40	40S	0.203	5.16	5.80	8.63	62.68	
		XS	80	80S	0.276	7.01	7.67	11.41	58.98	
		160			0.375	9.53	10.02	14.92	53.94	
		XX			0.552	14.02	13.71	20.39	44.96	
3	3.500	5	5S	0.083	2.11	3.03	4.52	3.334	84.68	
80	88.9	10	10S	0.120	3.05	4.34	6.46	3.260	82.80	
		STD	40	40S	0.216	5.49	7.58	11.29	77.92	
		XS	80	80S	0.300	7.62	10.26	15.27	73.66	
		160			0.438	11.13	14.34	21.35	66.64	
		XX			0.600	15.24	18.60	27.68	58.42	
3-1/2	4.000	5	5S	0.083	2.11	3.48	5.18	3.834	97.38	
90	101.6	10	10S	0.120	3.05	4.98	7.41	3.760	95.50	
		STD	40	40S	0.226	5.74	9.12	13.57	90.12	
		XS	80	80S	0.318	8.08	12.52	18.64	85.44	
		160			0.636	16.15	22.87	34.03	69.30	
4	4.500	5	5S	0.083	2.11	3.92	5.84	4.334	110.08	
100	114.3	10	10S	0.120	3.05	5.62	8.37	4.260	108.20	
		STD	40	40S	0.156	3.96	7.24	10.78	106.38	
		XS	80	80S	0.188	4.78	8.67	12.91	104.74	
		160			0.237	6.02	10.80	16.08	102.26	
		XX			0.337	8.56	15.00	22.32	97.18	
		120			0.438	11.13	19.02	28.32	92.04	
		160			0.531	13.49	22.53	33.54	87.32	
		XX			0.674	17.12	27.57	41.03	80.06	
4-1/2	5.000	STD	40	40S	0.247	6.27	12.55	18.67	4.506	114.46
115	127.0	XS	80	80S	0.355	9.02	17.63	26.24	4.290	108.96
		XX			0.710	18.03	32.56	48.45	3.580	90.94

IMPERIAL/METRIC

NOMINAL PIPE SIZE		SCHEDULE DESIGNATIONS		WALL THICKNESS		WEIGHT		ID		
INCH	OD	ASME		INCH	MM	LBS/FOOT	KG/METER	INCH	MM	
MM	MM									
5	5.563	5	5S	0.109	2.77	6.36	9.46	5.345	135.76	
125	141.3	10	10S	0.134	3.40	7.78	11.56	5.295	134.50	
		STD	40	40S	0.258	6.55	14.63	21.77	128.20	
		XS	80	80S	0.375	9.53	20.80	30.97	122.24	
		120			0.500	12.70	27.06	40.28	115.90	
		160			0.625	15.88	32.99	49.12	109.54	
		XX			0.750	19.05	38.59	57.43	103.20	
6	6.625	5	5S	0.109	2.77	7.59	11.31	6.407	162.76	
150	168.3	10	10S	0.134	3.40	9.30	13.83	6.357	161.50	
		STD	40	40S	0.188	4.78	12.94	19.28	158.74	
		XS	80	80S	0.280	7.11	18.99	28.26	154.08	
		120			0.432	10.97	28.60	42.56	146.36	
		160			0.562	14.27	36.43	54.21	139.76	
		XX			0.719	18.26	45.39	67.57	131.78	
		160			0.864	21.95	53.21	79.22	124.40	
7	7.625	STD	40	40S	0.301	7.65	23.57	35.10	7.023	178.40
175	193.7	XS	80	80S	0.500	12.70	38.08	56.69	6.625	168.30
		XX			0.875	22.23	63.14	94.00	5.875	149.24
8	8.625	5	5S	0.109	2.77	9.92	14.78	8.407	213.56	
200	219.1	10	10S	0.148	3.76	13.41	19.97	8.329	211.58	
		20			0.250	6.35	22.38	33.32	8.125	206.40
		30			0.277	7.04	24.72	36.82	8.071	205.02
		STD	40	40S	0.322	8.18	28.58	42.55	7.981	202.74
		60			0.406	10.31	35.67	53.09	7.813	198.48
		XS	80	80S	0.500	12.70	43.43	64.64	7.625	193.70
		100			0.594	15.09	51.00	75.92	7.437	188.92
		120			0.719	18.26	60.77	90.44	7.187	182.58
		140			0.812	20.62	67.82	100.93	7.001	177.86
		XX			0.875	22.23	72.49	107.93	6.875	174.64
		160			0.906	23.01	74.76	111.27	6.813	173.08
9	9.625	STD	40	40S	0.342	8.69	33.94	50.54	8.941	227.12
225	244.5	XS	80	80S	0.500	12.70	48.77	72.60	8.625	219.10
		XX			0.875	22.23	81.85	121.85	7.875	200.04
10	10.750	5	5S	0.134	3.40	15.21	22.61	10.482	266.20	
250	273.0	10	10S	0.165	4.19	18.67	27.78	10.420	264.62	
		20			0.188	4.78	21.23	31.62	10.374	263.44
		30			0.250	6.35	28.06	41.76	10.250	260.30
		STD	40	40S	0.307	7.80	34.27	51.01	10.136	257.40
		60			0.365	9.27	40.52	60.29	10.020	254.46
		XS	80	80S	0.500	12.70	54.79	81.53	9.750	247.60
		100			0.594	15.09	64.49	95.98	9.562	242.82
		120			0.719	18.26	77.10	114.71	9.312	236.48
		140			0.844	21.44	89.38	133.01	9.062	230.12
		XX			1.000	25.40	104.23	155.10	8.750	



NOMINAL PIPE SIZE	OD	SCHEDULE DESIGNATIONS	WALL THICKNESS		WEIGHT		ID				
			INCH	MM	LBS/ FOOT	KG/ METER	INCH	MM			
16 400	16.000 406.4	10S 10 20 STD 30 XS 40 80S	0.188	4.78	31.78	47.34	15.624	396.84			
			0.250	6.35	42.09	62.65	15.500	393.70			
			0.312	7.92	52.32	77.83	15.376	390.56			
			0.375	9.53	62.64	93.27	15.250	387.34			
			0.500	12.70	82.85	123.31	15.000	381.00			
			0.656	16.66	107.60	160.13	14.688	373.08			
			0.844	21.44	136.74	203.54	14.312	363.52			
			1.031	26.19	164.98	245.57	13.938	354.02			
			1.219	30.96	192.61	286.66	13.562	344.48			
			1.438	36.53	223.85	333.21	13.124	333.34			
			1.594	40.49	245.48	365.38	12.812	325.42			
			18 450	18.000 457	10S 10 20 STD 40S XS 80S	0.188	4.78	35.80	53.31	17.624	447.44
						0.250	6.35	47.44	70.57	17.500	444.30
0.312	7.92	58.99				87.71	17.376	441.16			
0.375	9.53	70.65				105.17	17.250	437.94			
0.438	11.13	82.23				122.38	17.124	434.74			
0.500	12.70	93.54				139.16	17.000	431.60			
0.562	14.27	104.76				155.81	16.876	428.46			
0.750	19.05	138.30				205.75	16.500	418.90			
0.938	23.83	171.08				254.57	16.124	409.34			
1.156	29.36	208.15				309.64	15.688	398.28			
1.375	34.93	244.37				363.58	15.250	387.14			
1.562	39.67	274.48				408.28	14.876	377.66			
1.781	45.24	308.79				459.39	14.438	366.52			
20 500	20.000 508	10S 10 20 STD 40S XS 80S	0.218	5.54	46.10	68.61	19.564	496.92			
			0.250	6.35	52.78	78.56	19.500	495.30			
			0.375	9.53	78.67	117.15	19.250	488.94			
			0.500	12.70	104.23	155.13	19.000	482.60			
			0.594	15.09	123.23	183.43	18.812	477.82			
			0.812	20.62	166.56	247.84	18.376	466.76			
			1.031	26.19	209.06	311.19	17.938	455.62			
			1.281	32.54	256.34	381.55	17.438	442.92			
			1.500	38.10	296.65	441.52	17.000	431.80			
			1.750	44.45	341.41	508.15	16.500	419.10			
			1.969	50.01	379.53	564.85	16.062	407.98			
			22 550	22.000 559	10S 10 20 STD 40S XS 80S	0.218	5.54	50.76	75.55	21.564	547.92
						0.250	6.35	58.13	86.55	21.500	546.30
0.375	9.53	86.69				129.14	21.250	539.94			
0.500	12.70	114.92				171.10	21.000	533.60			
0.875	22.23	197.60				294.27	20.250	514.54			
1.125	28.58	251.05				373.85	19.750	501.84			
1.375	34.93	303.16				451.45	19.250	489.14			
1.625	41.28	353.94				527.05	18.750	476.44			
1.875	47.63	403.38				600.67	18.250	463.74			
2.125	53.98	451.49				672.30	17.750	451.04			

NOMINAL PIPE SIZE	OD	SCHEDULE DESIGNATIONS	WALL THICKNESS		WEIGHT		ID				
			INCH	MM	LBS/ FOOT	KG/ METER	INCH	MM			
24 600	24.000 610	10 STD 20 XS 80S	0.250	6.35	63.47	94.53	23.500	597.30			
			0.375	9.53	94.71	141.12	23.250	590.94			
			0.500	12.70	125.61	187.07	23.000	584.60			
			0.562	14.27	140.81	209.65	22.876	581.46			
			0.688	17.48	171.45	255.43	22.624	575.04			
			0.969	24.61	238.57	355.28	22.062	560.78			
			1.219	30.96	296.86	442.11	21.562	548.08			
			1.531	38.89	367.74	547.74	20.938	532.22			
			1.812	46.02	429.79	640.07	20.376	517.96			
			2.062	52.37	483.57	720.19	19.876	505.26			
			2.344	59.54	542.64	808.27	19.312	490.92			
			26 650	26.000 660	10 STD 40S XS 80S	0.312	7.92	85.68	127.36	25.376	644.16
						0.375	9.53	102.72	152.88	25.250	640.94
0.500	12.70	136.30				202.74	25.000	634.60			
28 700	28.000 711	10 STD 40S XS 80S				0.312	7.92	92.35	137.32	27.376	695.16
						0.375	9.53	110.74	164.86	27.250	691.94
						0.500	12.70	146.99	218.71	27.000	685.60
30 750	30.000 762	10 STD 40S XS 80S	0.312	7.92	99.02	147.29	29.376	746.16			
			0.375	9.53	118.76	176.85	29.250	742.94			
			0.500	12.70	157.68	234.68	29.000	736.60			
			0.625	15.88	196.26	292.20	28.750	730.24			
			32 800	32.000 813	10 STD 20 XS 40	0.312	7.92	105.69	157.25	31.376	797.16
						0.375	9.53	126.78	188.83	31.250	793.94
0.500	12.70	168.37				250.65	31.000	787.60			
0.625	15.88	209.62				312.17	30.750	781.24			
34 850	34.000 864	10 STD 20 XS 40	0.312	7.92	112.36	167.21	33.376	848.16			
			0.375	9.53	134.79	200.82	33.250	844.94			
			0.500	12.70	179.06	266.63	33.000	838.60			
			0.625	15.88	222.99	332.14	32.750	832.24			
36 900	36.000 914	10 STD 20 XS 40	0.312	7.92	119.03	176.97	35.376	898.16			
			0.375	9.53	142.81	212.57	35.250	894.94			
			0.500	12.70	189.75	282.29	35.000	888.60			
			42 1050	42.000 1067	STD XS	0.375	9.53	166.86	248.53	41.250	1047.94
0.500	12.70	221.82				330.21	41.000	1041.60			
0.625	15.88	276.44				411.64	40.750	1035.24			
48 1200	48.000 1219	STD XS	0.750	19.05	330.72	492.33	40.500	1028.90			
			0.375	9.53	190.92	284.25	47.250	1199.94			
			0.500	12.70	253.89	377.81	47.000	1193.60			

PIPING • TUBING • FITTINGS FLANGES • RELATED PRODUCTS	
Type	Seamless
Commodity	Alloy • Stainless • Carbon • Low Temperature
Specifications	A/SA335 • A/SA312 • A/SA213 • A/SA106 • A/SA210 • A/SA53/API5L • A/SA333 • A/SA179 • BS:3059
Sizes (O.D.)	1/8" (3.175mm) - 36" (914.40mm)
Grades	Alloy: P1 • P5 • P9 • P11 • P22 • T11 • T22 Stainless: 304 • 304H • 304L • 316 • 316H • 316L • 316LN • 321 • 321H • 347 • 347H • 310 • 310s • 309 • Alloy 20 Low Temp: Grade 1/6 • Grade 3 Carbon: Grade B • Grade C • Part - II • Grade 360 • Grade 1

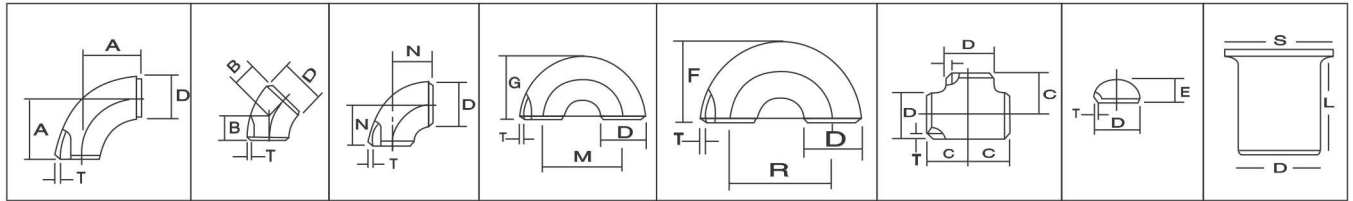
PIPING • TUBING • FITTINGS FLANGES • RELATED PRODUCTS	
Type	Welded - Straight Seam And Spiral
Commodity	Carbon • Stainless
Specifications	A/SA53/API5L • BS:3059 • BS:6323 • A/SA312 IS:1239 • IS:3589 • IS:1161 • IS:4270
Sizes (O.D.)	1/8" (3.175mm) - 64" (1625.60mm)
Grades	Carbon: Grade B • Grade C • Galvanized • Grade 320 • Part - II Stainless: 304 • 304H • 304L • 316 • 316H • 316L • 316LN • 321 • 321H • 347 • 347H • 310 • 310s • 309 • Alloy 20

HOLLOW SECTION	
Type	Seamless & Welded
Commodity	Carbon
Specifications	IS:4923
Sizes (O.D.)	Square - 10X10MM - 400 X 400 MM Rectangle - 20 X 10 MM - 400 X 300 MM
Wall Dimensions	2.00 MM - 20.00 MM

TRIVENI METAL CORPORATION SPECIALISTS	
<ul style="list-style-type: none"> Project Management Exceptional Mill/Sourcing Relations Just-In-Time Programs Inventory in Stock All Schedule Walls Special Heavy Walls to 4" (101.6mm) Header Pipe to 4" Wall (101.6mm) Special Intermediate Walls Average & Minimum Walls Saw Cut up to 40" (1016mm) Cutting: Square & Miter Custom Lengths and OD's Surface Testing Hard to Find Metals & Sizes Emergency Forged and Buttweld Fittings End Preparation - Various 	<ul style="list-style-type: none"> Dedicated Project Solution Teams Vendor Managed Inventory Programs Total ERP Solution Quick Response Programs Low Total Cost Solutions International Export & Packaging Quality Product ISO 9001-2008 Fast Delivery In-House Testing Destructive Examination Non-Destructive Examination Third Party Inspection Full EDI Capabilities Customized e-business Solutions Hardness Testing Solution
<p>Note: Actual dimensions can vary from the figures based on specifications/manufacturing tolerances. The Data for weight is based on the following calculation for wrought steel pipe: LB/Foot = (Outside diameter [in.] - Wall Thickness [in.]) x (Wall Thickness [in.]) x (10.69) KG/Meter = (Outside diameter [mm] - Wall Thickness [mm]) x (Wall Thickness [mm]) x (0.0246615)</p>	



DIMENSIONS OF BUTT-WELDING FITTING ANSI B-16.9 / B-16.28 / MSS SP 43



90 Elbow
Long Radius

45 Elbow

90 Elbow
Short Radius

180 Return
Short Radius

180 Return
Long Radius

Tee Equal Tee

Caps

Stub-End

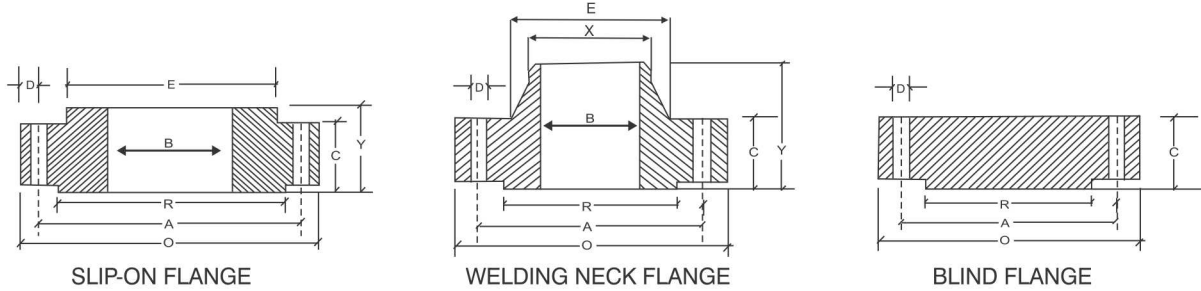
Nominal Pipe Size		Outside Diameter	Center to Face				Back to Face			Center to Center			Length 'L'	
INCH	MM	D	A R=1.5D	B	C	N R=1D	E	F	G	R	M	S	Short L	Long L
1/2	15	21.3	38.00	16.0	25.0	-	25.0	48.0	-	76.0		35.0	50.8	76.2
3/4	20	26.7	29.00	11.0	29.0	-	25.0	43.0	-	57.0		43.0	50.8	76.2
1	25	33.4	38.00	22.0	38.0	25.0	38.0	56.0	41.0	76.0	51.0	51.0	50.8	101.6
1.1/4	32	42.2	48.00	25.0	48.0	32.0	38.0	70.0	52.0	95.0	64.0	64.0	50.8	101.6
1.1/2	40	48.3	57.15	29.0	57.0	38.0	38.0	83.0	62.0	114.0	76.0	73.0	50.8	101.6
2	50	60.3	76.00	35.0	64.0	51.0	38.0	106.0	81.0	152.0	102.0	93.0	63.5	152.4
2.1/2	65	73.0	95.25	44.0	76.0	64.0	38.0	132.0	100.0	191.0	127.0	105.0	63.5	152.4
3	80	88.9	114.30	51.0	86.0	76.0	51.0	159.0	121.0	229.0	152.0	127.0	63.5	152.4
3.1/2	90	101.6	133.35	57.0	95.0	89.0	64.0	184.0	140.0	267.0	178.0	140.0	76.2	152.4
4	100	114.3	152.0	64.0	105.0	102.0	64.0	210.0	159.0	305.0	203.0	157.0	76.2	152.4
5	125	141.3	190.0	79.0	123.0	127.0	76.0	262.0	197.0	381.0	254.0	186.0	76.2	203.2
6	150	168.3	229.0	95.0	143.0	152.0	89.0	313.0	237.0	457.0	305.0	218.0	88.9	203.2
8	200	219.1	305.0	127.0	178.0	203.0	102.0	414.0	313.0	610.0	406.0	270.0	101.6	203.2
10	250	273.1	381.0	159.0	216.0	254.0	127.0	515.0	391.0	762.0	508.0	324.0	127.0	254.0
12	300	323.8	457.0	190.0	254.0	305.0	152.0	619.0	467.0	914.0	610.0	381.0	152.4	254.0
14	350	355.6	533.0	222.0	279.0	356.0	165.0	711.0	533.0	1067.0	711.0	413.0	152.4	305.0
16	400	406.4	610.0	254.0	305.0	406.0	178.0	813.0	610.0	1219.0	813.0	470.0	152.4	305.0
18	450	457.2	686.0	286.0	343.0	457.0	203.0	914.0	686.0	1372.0	914.0	533.0	152.4	305.0
20	500	508.0	762.0	318.0	381.0	508.0	229.0	1016.0	762.0	1524.0	1016.0	584.0	152.4	305.0
22	550	559.0	838.0	343.0	419.0	559.0	254.0	1118.0	838.0	1676.0	1118.0	614.4	152.4	305.0
24	600	610.0	914.0	381.0	432.0	610.0	267.0	1219.0	914.0	1829.0	1219.0	692.0	152.4	305.0
26	650	660.0	991.0	405.0	495.0	660.0	267.0							
28	700	711.0	1067.0	438.0	521.0	771.0	267.0							
30	750	762.0	1143.0	470.0	559.0	762.0	267.0							
32	800	813.0	1219.0	502.0	597.0	813.0	267.0							
34	850	864.0	1295.0	533.0	635.0	864.0	267.0							
36	900	914.4	1372.0	565.0	673.0	914.0	267.0							

All Dimensions in Millimeters





DIMENSIONS OF FORGED FLANGES AS PER ANSI 16.5



DIMENSIONS OF CLASS 150 FLANGES AS PER ANSI B 16.5

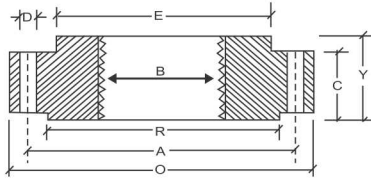
Nominal Pipe Size	Flange Dia	Dia of Bolt Circle	Dia of Bolt Holes	No. of Holes	Thk of Flange	Dia of Hub	Lenght through Hub			Dia of Bore		Dia of R/F	Depth of Socket	Pipe Dia	
							S/O & S/W	W/N	L/J	S/O & S/W	L/J				
							(MM)	(INCH.)	O	A	D				C
15	1/2	88.9	60.3	15.9	4	11.1	30.2	15.9	47.6	15.9	22.3	22.9	34.9	9.5	21.33
20	3/4	98.4	69.8	15.9	4	12.7	38.1	15.9	52.4	15.9	27.7	28.2	42.9	11.1	26.67
25	1	107.9	79.4	15.9	4	14.3	49.2	17.5	55.6	17.5	34.5	35.0	50.8	12.7	33.40
32	1 1/4	117.5	88.9	15.9	4	15.9	58.7	20.6	57.1	20.6	43.2	43.7	63.5	14.3	42.16
40	1 1/2	127.0	98.4	15.9	4	17.5	65.1	22.2	61.9	22.2	49.5	50.0	73.0	15.9	48.26
50	2	152.4	120.6	19.0	4	19.0	77.8	25.4	63.5	25.4	62.0	62.5	92.1	17.5	60.31
65	2 1/2	177.8	139.7	19.0	4	22.2	90.5	28.6	69.8	28.6	74.7	75.4	104.8	19.0	73.02
80	3	190.5	152.4	19.0	4	23.8	107.9	30.2	69.8	30.2	90.7	91.4	127.0	20.6	88.90
100	4	228.6	190.5	19.0	8	23.8	134.9	33.3	76.2	33.3	116.1	116.8	157.2	-	114.30
125	5	254.0	215.9	22.2	8	23.8	163.5	36.5	88.9	36.5	143.8	144.5	185.7	-	141.30
150	6	279.4	241.3	22.2	8	25.4	192.1	39.7	88.9	39.7	170.7	171.4	215.9	-	168.27
200	8	342.9	298.4	22.2	8	28.6	246.1	44.4	101.6	44.4	221.5	222.2	269.9	-	219.07
250	10	406.4	361.9	25.4	12	30.2	304.8	49.2	101.6	49.2	276.3	277.4	323.8	-	273.05
300	12	482.6	431.8	25.4	12	31.8	365.1	55.6	114.3	55.6	327.1	328.2	381.0	-	323.85
350	14	533.4	476.2	28.6	12	34.9	400.0	57.1	127.0	79.4	359.1	360.2	412.7	-	355.60
400	16	596.9	539.7	28.6	16	36.5	457.2	63.5	127.0	87.3	410.5	411.2	469.9	-	406.40
450	18	635.0	577.8	31.7	16	39.7	504.8	68.3	139.7	96.8	461.8	462.3	533.4	-	457.20
500	20	698.5	635.0	31.7	20	42.9	558.8	73.0	144.5	103.2	513.1	514.3	584.2	-	508.00
600	24	812.8	749.3	34.9	20	47.6	663.6	82.5	152.4	111.1	615.9	615.9	692.1	-	609.60

All Dimensions are in Millimeters • Flanges except Lap Joint will be furnished with (1.6mm) Raised Face, which is included in Thickness(C) and Lenght through Hub(Y).

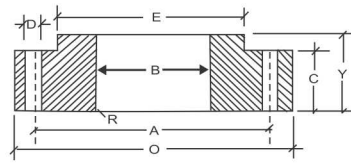
DIMENSIONS OF CLASS 300 FLANGES AS PER ANSI B 16.5

Nominal Pipe Size	Flange Dia	Dia of Bolt Circle	Dia of Bolt Holes	No. of Holes	Thk of Flange	Dia of Hub	Lenght through Hub			Dia of Bore		Dia of R/F	Depth of Socket	Pipe Dia	
							S/O & S/W	W/N	L/J	S/O & S/W	L/J				
							(MM)	(INCH.)	O	A	D				C
15	1/2	95.2	66.7	15.9	4	14.3	38.1	22.2	52.4	22.2	22.3	22.9	34.9	9.5	21.33
20	3/4	117.5	82.5	19.0	4	15.9	47.6	25.4	57.1	25.4	27.7	28.2	42.9	11.1	26.67
25	1	123.8	88.9	19.0	4	17.5	54.0	27.0	61.9	27.0	34.5	35.0	50.8	12.7	33.40
32	1 1/4	133.3	98.4	19.0	4	19.0	63.5	27.0	65.1	27.0	43.2	43.7	63.5	14.3	42.16
40	1 1/2	155.6	114.3	22.2	4	20.6	69.8	30.2	68.3	30.2	49.5	50.0	73.0	15.9	48.26
50	2	165.1	127.0	19.0	8	22.2	84.1	33.3	69.8	33.3	62.0	62.5	92.1	17.5	60.31
65	2 1/2	190.5	149.2	22.2	8	25.4	100.0	38.1	76.2	38.1	74.7	75.4	104.8	19.0	73.02
80	3	209.5	168.3	22.2	8	28.6	117.5	42.9	79.4	42.9	90.7	91.4	127.0	20.6	88.90
100	4	254.0	200.0	22.2	8	31.8	146.0	47.6	85.7	47.6	116.1	116.8	157.2	23.8	114.30
125	5	279.4	234.9	22.2	8	34.9	177.8	50.8	98.4	50.8	143.8	144.5	185.7	-	141.30
150	6	317.5	269.9	22.2	12	36.5	206.4	52.4	98.4	52.4	170.7	171.4	215.9	-	168.27
200	8	381.0	330.2	25.4	12	41.3	260.3	61.9	111.1	61.9	221.5	222.2	269.9	-	219.07
250	10	444.5	387.3	28.6	16	47.6	320.7	66.7	117.5	95.2	276.3	277.4	323.8	-	273.05
300	12	520.7	450.8	31.7	16	50.8	374.6	73.0	130.2	101.6	327.1	328.2	381.0	-	323.85
350	14	584.2	514.3	31.7	20	54.0	425.4	76.2	142.9	111.1	359.1	360.2	412.7	-	355.60
400	16	647.7	571.5	34.9	20	57.2	482.6	82.5	146.0	120.6	410.5	411.2	469.9	-	406.40
450	18	711.2	628.5	34.9	24	60.3	533.4	88.9	158.7	130.2	461.8	462.3	533.4	-	457.20
500	20	774.7	685.8	34.9	24	63.5	587.4	95.2	161.9	139.7	513.1	514.3	584.2	-	508.00
600	24	914.4	812.8	41.3	24	69.8	701.7	106.4	168.3	152.4	615.9	615.9	692.1	-	609.60

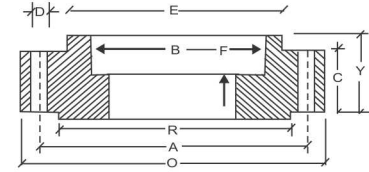
All Dimensions are in Millimeters • Flanges except Lap Joint will be furnished with (1.6mm) Raised Face, which is included in Thickness(C) and Lenght through Hub(Y).



THREADED FLANGES



LAP JOINT FLANGES



SOCKET WELD FLANGES

DIMENSIONS OF CLASS 600 FLANGES AS PER ANSI B 16.5

Nominal Pipe Size (MM)	Flange Dia O	Dia of Bolt Circle A	Dia of Bolt Holes D	No. of Holes	Thk of Flange C	Dia of Hub E	Lenght through Hub			Dia of Bore		Dia of R/F R	Depth of Socket F	Pipe Dia X
							S/O & S/W Y	W/N Y	L/J Y	S/O & S/W B	L/J B			
							Y	Y	Y	B	B			
15	95.2	66.7	15.9	4	14.3	38.1	22.2	52.4	22.3	22.3	22.8	34.9	9.5	21.33
20	117.5	82.5	19.0	4	15.9	47.6	25.4	57.1	25.4	27.7	28.1	42.9	11.1	26.67
25	123.8	88.9	19.0	4	17.5	54.0	27.0	61.9	26.9	34.5	35.0	50.8	12.7	33.40
32	133.3	98.4	19.0	4	20.6	63.5	28.6	66.7	28.4	43.2	43.6	63.5	14.2	42.16
40	155.6	114.3	22.2	4	22.2	69.8	31.7	69.8	31.7	49.5	50.0	73.0	15.8	48.26
50	165.1	127.0	19.0	8	25.4	84.1	36.5	73.0	36.5	62.0	62.4	92.1	17.4	60.31
65	190.5	149.2	22.2	8	28.6	100.0	41.3	79.4	41.1	74.7	75.4	104.8	19.0	73.02
80	209.5	168.3	22.2	8	31.8	117.5	46.0	82.5	45.9	90.7	91.4	127.0	20.6	88.90
100	273.0	215.9	25.4	8	38.1	152.4	54.0	101.6	53.8	116.1	116.8	157.2	-	114.30
125	330.2	266.7	28.6	8	44.4	188.9	60.3	114.3	60.4	143.8	144.5	185.7	-	141.30
150	355.6	292.1	28.6	12	47.6	222.2	66.7	117.5	66.5	170.7	171.4	215.9	-	168.27
200	419.1	349.2	31.7	12	55.6	273.0	76.2	133.3	76.2	221.5	222.2	269.9	-	219.07
250	508.0	431.8	34.9	16	63.5	342.9	85.7	152.4	111.2	276.3	277.4	323.8	-	273.05
300	558.8	488.9	34.9	20	66.7	400.0	92.1	155.6	117.3	327.1	328.2	381.0	-	323.85
350	603.2	527.0	38.1	20	69.9	431.8	93.7	165.1	127.0	359.1	360.1	412.7	-	355.60
400	685.8	603.2	41.3	20	76.2	495.3	106.4	177.8	139.7	410.5	411.2	469.9	-	406.40
450	742.9	654.0	44.4	20	82.6	546.1	117.5	184.1	152.4	461.8	462.3	533.4	-	457.20
500	812.8	723.9	44.4	24	88.9	609.9	127.0	190.5	165.1	513.1	514.3	584.2	-	508.00
600	939.8	838.2	50.8	24	101.6	717.5	139.7	203.2	184.1	615.9	615.9	692.1	-	609.60

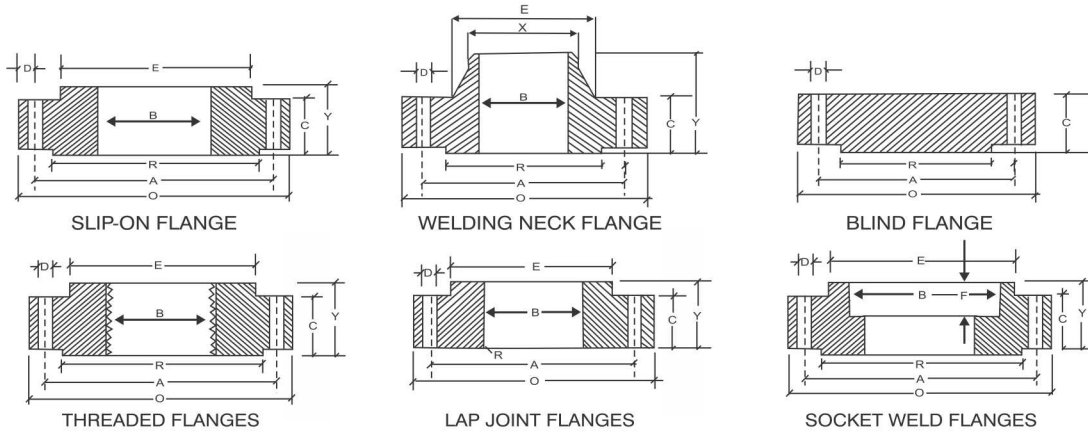
DIMENSIONS OF CLASS 900 FLANGES AS PER ANSI B 16.5

Nominal Pipe Size (MM)	Flange Dia O	Dia of Bolt Circle A	Dia of Bolt Holes D	No. of Holes	Thk of Flange C	Dia of Hub E	Lenght through Hub			Dia of Bore		Dia of R/F R	Depth of Socket F	Pipe Dia X
							S/O & S/W Y	W/N Y	L/J Y	S/O & S/W B	L/J B			
							Y	Y	Y	B	B			
15	120.6	82.5	22.2	4	22.2	38.1	31.7	60.3	31.7	22.3	22.8	34.9	9.5	21.33
20	130.2	88.9	22.2	4	25.4	44.4	34.9	69.8	35.0	27.7	28.1	42.9	11.1	26.67
25	149.2	101.6	25.4	4	28.6	52.4	41.3	73.0	41.1	34.5	35.0	50.8	12.7	33.40
32	158.7	111.1	25.4	4	28.6	63.5	41.3	73.0	41.1	43.2	43.6	63.5	14.2	42.16
40	177.8	123.8	28.6	4	31.8	69.8	44.4	82.5	44.4	49.5	50.0	73.0	15.8	48.26
50	215.9	165.1	25.4	8	38.1	104.8	57.1	101.6	57.1	62.0	62.4	92.1	17.4	60.31
65	244.5	190.5	28.6	8	41.3	123.8	63.5	104.8	63.5	74.7	75.4	104.8	19.0	73.02
80	241.3	190.5	25.4	8	38.1	127.0	53.9	101.6	53.8	90.7	91.4	127.0	-	88.90
100	292.1	234.9	31.7	8	44.4	158.7	69.8	114.3	69.8	116.0	116.8	157.2	-	114.30
125	349.2	279.4	35.0	8	50.8	190.5	79.3	127.0	79.2	143.7	144.5	185.7	-	141.30
150	381.0	317.5	31.7	12	55.6	234.9	85.8	139.7	85.8	170.6	171.4	215.9	-	168.27
200	469.9	393.7	38.1	12	63.5	298.4	101.6	162.0	114.3	221.4	222.2	269.9	-	219.07
250	546.1	469.9	38.1	16	69.8	368.3	107.9	184.1	127.0	276.3	277.3	323.8	-	273.05
300	609.6	533.4	38.1	20	79.3	419.1	117.4	200.0	142.7	327.1	328.1	381.0	-	323.85
350	641.3	558.8	41.3	20	85.7	450.9	130.2	212.7	155.6	359.1	360.1	412.7	-	355.60
400	704.8	615.9	44.4	20	88.9	508.0	133.3	215.9	165.9	410.5	411.2	469.9	-	406.40
450	787.4	685.8	50.8	20	101.6	565.2	152.4	228.6	190.5	461.8	462.3	533.4	-	457.20
500	857.2	749.3	54.0	20	107.9	622.3	158.7	247.6	209.5	513.1	514.3	584.2	-	508.00
600	1041.4	901.7	66.5	20	139.7	749.3	203.2	292.1	266.7	615.9	615.9	692.1	-	609.60

All Dimensions are in Millimeters. Flanges except Lap Joint will be furnished with (6.35mm) Raised Face, which is not included in Thickness(C) and Lenght through Hub(Y).



DIMENSIONS OF FORGED FLANGES ANSI B 16.5



DIMENSIONS OF CLASS1500 FLANGES AS PER ANSI B 16.5

Nominal Pipe Size	Flange Dia	Dia of Bolt Circle	Dia of Bolt Holes	No. of Holes	Thk of Flange	Dia of Hub	Lenght through Hub			Dia of Bore		Dia of R/F	Depth of Socket	Pipe Dia	
							S/O & S/W	W/N	L/J	S/O & S/W	L/J				
(MM)	(INCH.)	O	A	D	C	E	Y	Y	Y	B	B	R	F	X	
For Dimensions from 1/2" to 2 1/2" kindly refer ASA 900 LBS Table.															
80	3	266.7	203.2	31.8	8	47.8	133.4	0.0	73.2	117.3	-	91.4	127.0	-	88.9
100	4	311.2	241.3	34.9	8	53.8	162.1	0.0	90.4	124.0	-	116.8	157.2	-	114.3
125	5	374.7	292.1	41.3	8	73.2	196.9	0.0	104.6	155.4	-	145.5	185.7	-	141.3
150	6	393.7	317.5	38.1	12	82.6	228.6	0.0	119.1	171.4	-	171.5	215.9	-	168.3
200	8	482.6	393.7	44.5	12	92.9	292.1	0.0	142.7	212.9	-	222.3	269.7	-	219.1
250	10	584.2	482.6	50.8	12	1080.	368.3	0.0	177.8	254.0	-	277.4	323.9	-	273.1
300	12	673.1	571.5	54.0	16	124.0	450.9	0.0	218.9	282.4	-	328.2	381.0	-	323.9
350	14	749.3	635.0	60.3	16	133.4	495.3	0.0	241.3	298.5	-	360.2	412.8	-	356.6
400	16	825.5	704.9	66.7	16	146.1	552.3	0.0	260.4	311.2	-	411.2	469.9	-	406.4
450	18	914.4	774.7	73.0	16	162.1	596.9	0.0	276.4	327.2	-	462.3	533.4	-	457.2
500	20	984.3	831.8	79.4	16	177.8	641.1	0.0	292.1	355.6	-	514.4	584.2	-	508.0
600	24	1168.4	990.6	92.1	16	203.2	762.0	0.0	330.2	406.4	-	616.0	692.2	-	609.6

All Dimensions are in Millimeters • Flanges except Lap Joint will be furnished with(6.35mm) Raised Face, which is not included in Thickness(C) and Lenght through Hub(Y).

DIMENSIONS OF CLASS 2500 FLANGES AS PER ANSI B 16.5

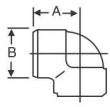
Nominal Pipe Size	Flange Dia	Dia of Bolt Circle	Dia of Bolt Holes	No. of Holes	Thk of Flange	Dia of Hub	Lenght through Hub			Dia of Bore		Dia of R/F	Depth of Socket	Pipe Dia	
							S/O & S/W	W/N	L/J	S/O & S/W	L/J				
(MM)	(INCH.)	O	A	D	C	E	Y	Y	Y	B	B	R	F	X	
15	1/2	133.3	88.9	22.2	4	30.2	42.9	39.7	73.0	39.7	22.3	22.3	34.9	-	21.33
20	3/4	139.7	95.3	22.2	4	31.7	50.8	42.9	79.4	42.9	27.7	27.7	42.9	-	26.67
25	1	158.7	107.9	25.4	4	34.9	57.1	47.7	88.9	47.7	34.5	34.5	50.8	-	33.40
32	1 1/4	184.1	130.2	28.6	4	38.1	73.0	52.4	95.2	52.4	43.2	43.2	63.5	-	42.16
40	1 1/2	203.2	146.0	31.7	4	44.4	79.4	60.3	111.1	60.3	49.5	49.5	73.0	-	48.26
50	2	234.9	171.4	28.6	8	50.8	95.2	69.8	127.0	69.8	62.4	62.0	92.1	-	60.31
65	2 1/2	266.7	196.8	31.7	8	57.1	114.3	79.4	142.9	79.4	74.7	74.7	104.8	-	73.02
80	3	304.8	228.6	34.9	8	66.7	133.3	92.1	168.3	92.1	90.7	90.7	127.0	-	88.90
100	4	355.6	273.0	41.2	8	76.2	165.1	107.9	190.5	107.9	116.1	116.1	157.2	-	114.30
125	5	419.1	323.8	47.6	8	92.1	203.2	130.0	228.6	130.0	143.8	143.8	185.7	-	141.30
150	6	482.6	368.3	54.0	8	107.9	234.9	152.4	273.0	152.4	170.7	170.7	215.9	-	168.27
200	8	552.4	438.1	54.0	12	127.0	304.8	177.8	317.5	177.8	221.5	221.5	269.9	-	219.20
250	10	673.1	539.7	66.7	12	165.1	374.6	228.6	419.1	228.6	276.3	276.3	323.8	-	273.05
300	12	762.0	619.1	73.0	12	184.1	441.3	254.0	463.5	254.0	327.1	327.1	381.0	-	323.85

All Dimensions are in Millimeters • Flanges except Lap Joint will be furnished with(6.35mm) Raised Face, which is not included in Thickness(C) and Lenght through Hub(Y).

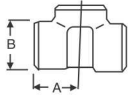


DIMENSION IN MM OF FORGED SCREWED FITTINGS TO ANSI B-16.11 THREADED TO ASA B 2.1

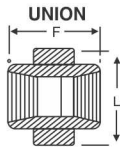
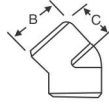
90° ELBOWS



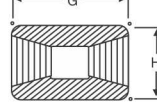
TEE



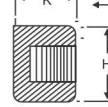
45° ELBOW



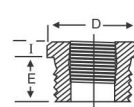
COUPLING



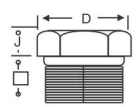
PIPE CAP



BUSHING



HEX HEAD PLUG

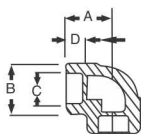


HALF COUPLING = G/2

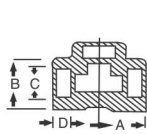
NOM BORE	PIPE O.D.	3000 L.B.S.						COMMON FACTORS						6000 L.B.S.					
		A	B	C	G	H	K	D	E	F	I	J	L	A	B	C	G	H	K
1/8"	10.3	21	22	17	32	16	19	11	10	40	-	6	-	25	25	19	32	22	-
1/4"	13.7	25	25	19	35	19	25	16	11	43	3	6	32	29	33	22	35	25	27
3/8"	17.2	29	33	22	38	22	25	17.5	13	48	4	8	38	33	38	25	38	32	27
1/2"	21.3	33	38	25	48	29	32	22	15	51	5	8	46	38	46	29	48	38	33
3/4"	26.7	38	46	29	51	35	37	27	16	57	6	10	51	44	56	33	51	44	38
1"	33.4	44	56	33	60	44	41	35	19	64	6	10	60	51	62	35	60	57	43
1 1/4"	42.2	51	62	35	67	57	44	44.5	21	70	7	14	72	60	75	43	67	64	46
1 1/2"	48.3	60	75	43	79	64	44	51	21	79	8	16	80	64	84	44	79	76	48
2"	60.3	64	84	45	86	76	48	63.5	22	88	9	17	94	83	102	52	86	92	51
2 1/2"	73.02	83	102	52	92	92	60	76	27	118	10	21	122	95	121	64	92	108	64
3"	89.0	95	121	64	108	108	65	89	29	121	10	25	140	106	146	79	108	127	68
4"	114.5	114	152	79	121	140	68	117.5	32	150	13	25	180	114	152	79	121	159	75

SOCKET WELD FITTING TO ANSI B-16.11

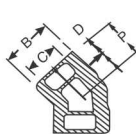
90° ELBOWS



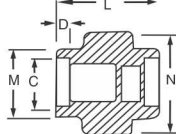
TEE



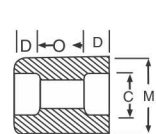
45° ELBOW



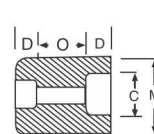
UNION



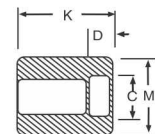
COUPLING



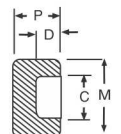
REDUCER



HALF COUPLING



CAP



NOM BORE	PIPE O.D.	3000 L.B.S.								COMMON FACTORS					6000 L.B.S.				
		A	B	K	J	L	M	N	P	Q	C min	D min	O min	O max	A	B	M	K	N
1/8"	10.3	22	18.5	26	16	40	17.3	32	17.5	10	10.7	10	5	8	22	22	20	25	46
1/4"	13.7	22	22	26	18	43	21.2	32	17.5	10	14.1	10	5	8	27	25	24	25	51
3/8"	17.2	25	25	26	19	48	25.4	36	19	10	17.6	10	3	9	27	28	28	26	60
1/2"	21.3	27	32	30	21	51	31	43	22	10	21.7	10	6	13	31	34	34	31	72
3/4"	26.7	34	38	36	24	57	37	50	25	13	27	13	6	13	37	42	41	35	80
1"	33.4	37	46	40	25	64	45.2	60	27	13	33.8	13	9	17	42	50	50	40	94
1 1/4"	42.2	42	56	40	29	70	55	70	30	13	42.6	13	9	17	47	59	58	41	100
1 1/2"	48.3	47	62	40	30	79	61.4	78	32	13	48.7	13	9	17	53	67	55	43	122
2"	60.3	56	75	52	37	89	75	95	38	13	61.2	16	15	23	59	84	83	55	
2 1/2"	73.02	60	92	52	48	114	91.3	125	38	16	73.8	16	14	24		102		56	
3"	89.00	76	110	52	51	127	108.8	140	44	16	89.8	16	14	24		121		58	
4"	114.50	88	137	58		150	136.9		48	19	115.5	19	14	24		152		64	

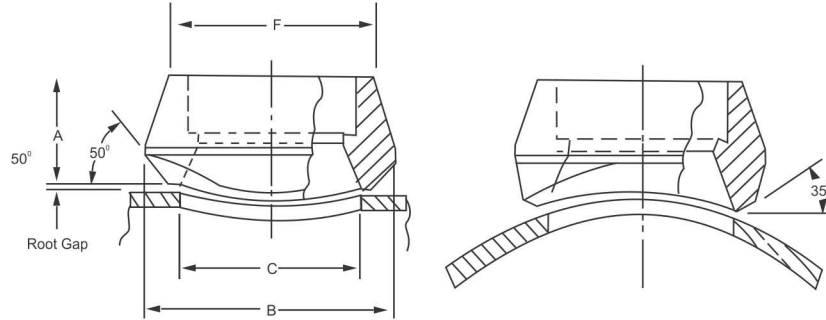
DIMENSIONS AND OTHERS SPECIFICATIONS AS PER CUSTOMERS REQUIREMENTS ARE AVAILABLE ON REQUEST



Dimensions of Branch Connectors FORGED STEEL OUTLET FITTINGS

Sockolets

3000# 6000#

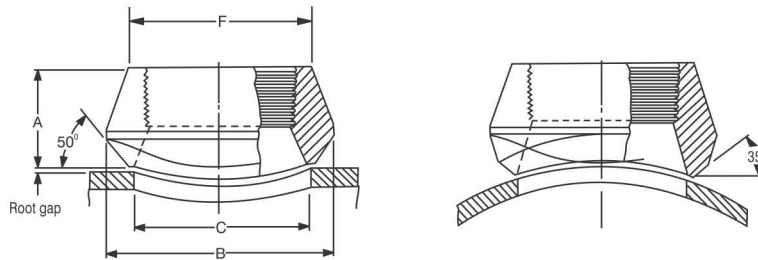


Outlet Size	A		B		C	
	3000#	6000#	3000#	6000#	3000#	6000#
1/2	25.4	31.8	34.9	44.5	23.8	19.1
3/4	27.0	36.5	44.5	50.8	30.2	25.4
1	33.3	39.7	54.0	61.9	36.5	33.3
1 1/4	33.3	41.3	65.1	69.9	44.5	38.1
1 1/2	34.9	42.9	73.0	82.6	50.8	49.2
2	38.1	58.7	88.9	103.2	65.1	58.7
2 1/2	46.0	-	103.2	-	76.2	-
3	50.8	-	122.2	-	93.7	-
4	57.2	-	152.4	-	120.7	-

FORGED STEEL OUTLET FITTINGS

Thredolets

3000# 6000#



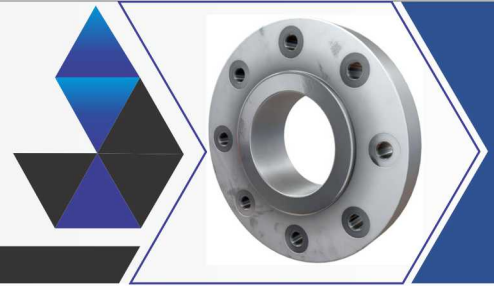
Outlet Size	A		B		C	
	3000#	6000#	3000#	6000#	3000#	6000#
1/2	25.4	31.8	34.9	44.5	23.8	19.1
3/4	27.0	36.5	44.5	50.8	30.2	25.4
1	33.3	39.7	54.0	61.9	36.5	33.3
1 1/4	33.3	41.3	65.1	69.9	44.5	38.1
1 1/2	34.9	42.9	73.0	82.6	50.8	49.2
2	38.1	52.4	88.9	103.2	65.1	69.9
2 1/2	46.0	-	103.2	-	76.2	-
3	50.8	-	122.2	-	93.7	-
4	57.2	-	152.4	-	120.7	-

Applicable Run Pipe Sizes are From out-Let to 36"

For the 3000# and 6000# Sockolets and Thredolets, Inside Bore, Thread, Socket Bore and Socket depth Dimensions are According to ANSI B16.11

Pipe Schedule Numbers and Weight Designation are in Accordance With ANSI B36.10

When Ordering Sockolets and Thredolets, Include The Quantity, Run and Out-Let Size, Item And Rating(or Schedule Number)and Material

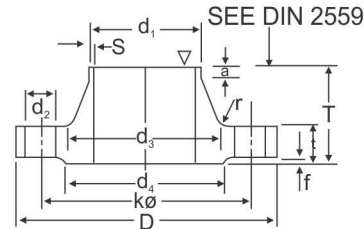


6BAR

DIN 2573 SLIP - ON FLANGES

DIN 2527 BLIND FLANGES

DIN 2631 WELDING NECK FLANGES

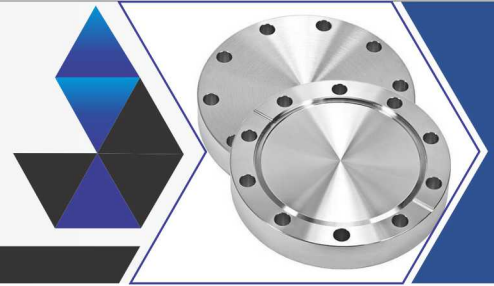


WELDING NECK

Unit : mm

Bore		Common Dimension						Hub				Raise Face		Drilling			Approx Weight (kg)		
Nominal Bore	d ₁	D	t			K	T	d ₃	s	r	a	d ₄	f	No. of Bolt	Dia. of Bolt	d ₂	DIN 2573	DIN 2631	
			Welding neck	slip-on	Blind						≈								
10	14 (17.2*)	75	12	12	12	50	28	22 26	1.8	4	6	35	2	4	M10	-	11.5	0.036	0.335
15	20 (21.3*)	80	12	12	12	55	30	28 30	2.0	4	6	40	2	4	M10	-	11.5	0.410	0.392
20	25 (26.9*)	90	14	14	14	65	32	35 38	2.3	4	6	50	2	4	M10	-	11.5	0.600	0.592
25	30 (33.7*)	100	14	14	14	75	35	40 42	2.6	4	6	60	2	4	M10	-	11.5	0.740	0.747
32	38 (42.4*)	120	14	16	14	90	35	50 55	2.6	6	6	70	2	4	M12	(1/2")	14	1.19	1.05
40	44.5 (48.3*)	130	14	16	14	100	38	58 62	2.6	6	7	80	3	4	M12	(1/2")	14	1.39	1.18
50	57 (60.3*)	140	14	16	14	110	38	70 74	2.9	6	8	90	3	4	M12	(1/2")	14	1.53	1.34
65	76.1*)	160	14	16	14	130	38	88	2.9	6	9	110	3	4	M12	(1/2")	14	1.89	1.67
80	88.9*)	190	16	18	16	150	42	102	3.2	8	10	128	3	4	M16	(5/8")	18	2.98	2.71
100	108 (114.3*)	210	16	18	16	170	45	122 130	3.6	8	10	148	3	4	M16	(5/8")	18	3.46	3.24
125	133 (139.7*)	240	18	20	18	200	48	148 155	4.0	8	10	178	3	8	M16	(5/8")	18	4.60	4.49
150	159 (168.3*)	265	18	20	18	225	48	172 184	4.5	10	12	202	3	8	M16	(5/8")	18	5.22	5.15
200	216 (219.1*)	320	20	22	20	280	55	230 236	5.9	10	15	258	3	8	M16	(5/8")	18	7.15	7.78
250	267 (273*)	375	22	24	22	335	60	282 290	6.2	12	15	312	3	12	M16	(5/8")	18	9.61	10.8
300	381 (323.9*)	440	22	24	22	395	62	335 342	7.1	12	15	365	4	12	M20	(3/4")	23	12.6	14.0
350	355.6*) 368	490	22	26	22	445	62	385	7.1	12	15	415	4	12	M20	(3/4")	23	15.6	16.1
400	406.4*) 418	540	22	28	22	495	65	438	7.1	12	15	455	4	16	M20	(3/4")	23	18.4	18.3
500	508*) 521	645	24	30	24	600	68	538	7.1	12	15	570	4	20	M20	(3/4")	23	24.5	24.6
600	609.6*) 622	755	24			705	70	640	7.1	12	16	670	5	20	M24	(7/8")	27		
700	711.2*) 720	860	24			810	70	740	7.1	12	16	775	5	24	M24	(7/8")	27		
800	812.8*) 820	975	24			920	70	842	7.1	12	16	880	5	24	M27	(1")	30		
900	914.4*) 920	1075	26			1020	70	942	7.1	12	16	980	5	24	M27	(1")	30		
1000	1016*) 1020	1175	26			1120	70	1045	7.1	16	16	1080	5	28	M27	(1")	30		

Out side diameter of pipe complies with ISO recommendation R64

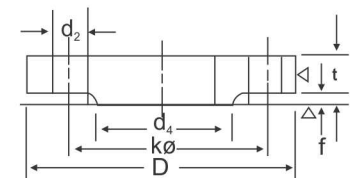
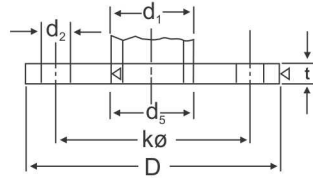


10BAR

DIN 2576 SLIP - ON FLANGES

DIN 2527 BLIND FLANGES

DIN 2632 WELDING NECK FLANGES



SLIP-ON

BLIND

Unit : mm

Bore		Common Dimension						Hub				Raise Face		Drilling			Approx Weight (kg)		
Nominal Bore	d ₁	D	t			K	T	d ₃	s	r	a ≈	d ₄	f	No. of Bolt	Dia. of Bolt	d ₂	DIN 2576	DIN 2632	
			Welding neck	slip-on	Blind														
10	14 (17.2*)	90	14	14	14	60	35	25 28	1.8	4	6	40	2	4	M12	(1.2")	14	0.163	0.580
15	20 (21.3*)	95	14	14	14	65	35	30 32	2.0	4	6	45	2	4	M12	(1.2")	14	0.675	0.648
20	25 (26.9*)	105	16	16	16	75	38	38 40	2.3	4	6	58	2	4	M12	(1.2")	14	0.947	0.952
25	30 (33.7*)	115	16	16	16	85	38	42 45	2.6	4	6	68	2	4	M12	(1.2")	14	1.14	1.14
32	38 (42.4*)	140	16	16	16	100	40	52 56	2.6	6	6	78	2	4	M16	(5/8")	18	1.66	1.69
40	44.5 (48.3*)	150	16	16	18	110	42	60 64	2.6	6	7	88	3	4	M16	(5/8")	18	1.89	1.86
50	57 (60.3*)	165	18	18	18	125	45	72 75	2.9	6	8	102	3	4	M16	(5/8")	18	2.51	2.53
65	76.1*)	185	18	18	18	145	45	90	2.9	6	10	122	3	4	M16	(5/8")	18	3.00	3.06
80	88.9*)	200	20	20	20	160	50	105	3.2	8	10	138	3	4	M16	(5/8")	18	3.79	3.70
100	108 (114.3*)	220	20	20	20	180	52	125 131	3.6	8	12	158	3	8	M16	(5/8")	18	4.20	4.62
125	133 (139.7*)	250	22	22	22	210	55	150 156	4.0	8	12	188	3	8	M16	(5/8")	18	5.71	6.30
150	159 (168.3*)	285	22	22	22	240	55	175 184	4.5	10	12	212	3	8	M20	(3/4")	23	6.72	7.75
200	216 (219.1*)	340	24	24	24	295	62	232 235	5.9	10	16	268	3	8	M20	(3/4")	23	9.50	11.3
250	267 (273*)	395	26	26	26	350	68	285 292	6.3	12	16	320	3	12	M20	(3/4")	23	12.5	14.7
300	381 (323.9*)	445	26	26	28	400	68	335 344	7.1	12	16	370	4	12	M20	(3/4")	23	14.4	17.6
350	355.6*) 368	505	26	28	30	460	68	385	7.1	12	16	430	4	16	M20	(3/4")	23	20.6	21.4
400	406.4*) 419	565	26	32	32	515	72	440	7.1	12	16	482	4	16	M24	(7/8")	27	27.9	26.1
500	508*) 521	670	28	38	34	620	75	542	7.1	12	16	585	4	20	M24	(7/8")	27	41.1	34.7
600	609.6*) 622	780	28			725	80	642	7.1	12	18	685	5	20	M27	(1")	30		
700	711.2*) 720	895	30			840	80	754	8.0	12	18	800	5	24	M27	(1")	30		
800	812.8*) 820	1015	32			950	90	850	8.0	12	18	905	5	24	M30	(1.1/8")	30		
900	914.4*) 920	1115	34			1050	95	950	10.0	12	20	1005	5	28	M30	(1.1/8")	33		
1000	1016*) 1020	1230	34			1160	95	1052	10.0	16	20	1110	5	28	M33	(1 1/4")	36		

Out side diameter of pipe complies with ISO recommendation R64

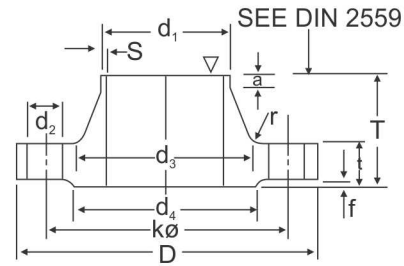


16BAR

DIN 2543 SLIP - ON FLANGES

DIN 2527 BLIND FLANGES

DIN 2633 WELDING NECK FLANGES



WELDING NECK

Unit : mm

Bore		Common Dimension					Hub				Raise Face		Drilling			Approx Weight (kg)		
Nominal Bore	d ₁	D	Welding neck	slip-on (No-hub)	Blind	K	T	d ₃	s	r	a ≈	d ₄	f	No. of Bolt	Dia. of Bolt	d ₂	DIN 2543	DIN 2633
10	14 (17.2*)	90	14	14	14	60	35	25 28	1.8	4	6	40	2	4	M12 (1.2")	14	0.63	0.580
15	20 (21.3*)	95	14	14	14	65	35	30 32	2.0	4	6	45	2	4	M12 (1.2")	14	0.72	0.648
20	25 (26.9*)	105	16	16	16	75	38	38 40	2.3	4	6	58	2	4	M12 (1.2")	14	1.01	0.952
25	30 (33.7*)	115	16	16	16	85	38	42 45	2.6	4	6	68	2	4	M12 (1.2")	14	1.23	1.14
32	38 (42.4*)	140	16	16	16	100	40	52 56	2.6	6	6	78	2	4	M16 (5/8")	18	1.80	1.69
40	44.5 (48.3*)	150	16	16	16	110	42	60 64	2.6	6	7	88	3	4	M16 (5/8")	18	2.09	1.86
50	57 (60.3*)	165	18	18	18	125	45	72 75	2.9	6	8	102	3	4	M16 (5/8")	18	2.88	2.53
65	76.1*)	185	18	18	18	145	45	90	2.9	6	10	122	3	4	M16 (5/8")	18	3.66	3.06
80	88.9*)	200	20	20	20	160	50	105	3.2	8	10	138	3	8	M16 (5/8")	18	4.77	3.70
100	108 (114.3*)	220	20	20	20	180	52	125 131	3.6	8	12	158	3	8	M16 (5/8")	18	5.65	4.62
125	133 (139.7*)	250	22	22	22	210	55	150 156	4.0	8	12	188	3	8	M16 (5/8")	18	8.42	6.30
150	159 (168.3*)	285	22	22	22	240	55	175 184	4.5	10	12	212	3	8	M20 (3/4")	23	10.4	7.75
200	216 (219.1*)	340	24	24	24	295	62	232 235	5.9	10	16	268	3	12	M20 (3/4")	23	16.1	11.0
250	267 (273*)	405	26	26	26	355	70	285 292	6.3	12	16	320	3	12	M24 (7/8")	27	24.9	15.6
300	381 (323.9*)	460	28	28	28	410	78	338 344	7.1	12	16	378	4	12	M24 (7/8")	27	35.1	22.0
350	355.6*) 368	520	30	30	30	470	82	390	8.0	12	16	438	4	16	M24 (7/8")	27	47.8	28.7
400	406.4*) 419	580	32	32	32	525	85	445	8.8	12	16	490	4	16	M27 (1")	30	63.5	36.3
500	508*) 521	715	34	36	34	650	90	548	8.0	12	16	610	4	20	M30 (1 1/8")	33	102.0	59.3
600	609.6*) 622	840	36	40		770	95	652	8.8	12	18	725	5	20	M33 (1 1/4")	36		
700	711.2*) 720	910	36			840	100	755	8.8	12	18	795	5	24	M33 (1 1/4")	36		
800	812.8*) 820	1025	38			950	105	855	10.0	12	20	900	5	24	M36 (1 3/8")	39		
900	914.4*) 920	1125	40			1050	110	955	10.0	12	20	1000	5	28	M36 (1 3/8")	39		
1000	1016*) 1020	1255	42			1170	120	1058	10.0	16	20	1115	5	28	M39 (1 1/2")	42		

Out side diameter of pipe complies with ISO recommendation R64

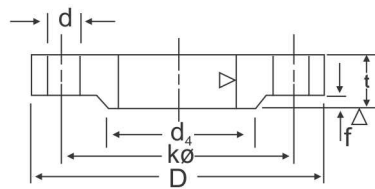


25BAR

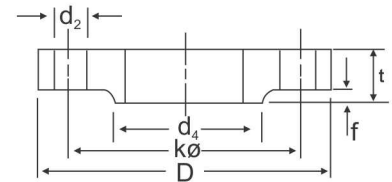
DIN 2544 SLIP - ON FLANGES

DIN 2527 BLIND FLANGES

DIN 2634 WELDING NECK FLANGES



SLIP-ON

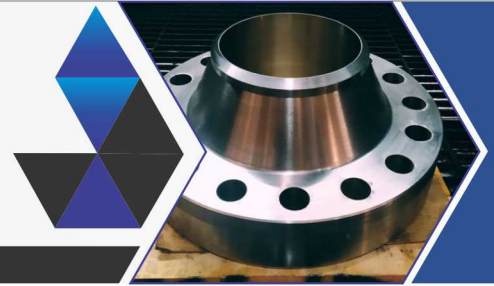


BLIND

Unit : mm

Bore		Common Dimension						Hub				Raise Face		Drilling			Approx Weight (kg)		
Nominal Bore	d ₁	D	t			K	T	d ₃	s	r	a ≈	d ₄	f	No. of Bolt	Dia. of Bolt		d ₂	DIN 2544	DIN 2634
			Welding neck	slip-on (No-hub)	Blind														
10	14 (17.2*)	90	16	16	16	60	35	25 28	1.8	4	6	40	2	4	M12	(1.2")	14	0.72	0.661
15	20 (21.3*)	95	16	16	16	65	35	30 32	2.0	4	6	45	2	4	M12	(1.2")	14	0.81	0.746
20	25 (26.9*)	105	18	18	18	75	40	38 40	2.3	4	6	58	2	4	M12	(1.2")	14	1.24	1.06
25	30 (33.7*)	115	18	18	18	85	40	42 46	2.6	4	6	68	2	4	M12	(1.2")	14	1.38	1.29
32	38 (42.4*)	140	18	18	18	100	42	52 56	2.6	6	6	78	2	4	M16	(5/8")	18	2.03	1.88
40	44.5 (48.3*)	150	18	18	18	110	45	60 64	2.6	6	7	88	3	4	M16	(5/8")	18	2.35	2.34
50	57 (60.3*)	165	20	20	20	125	48	72 75	2.9	6	8	102	3	4	M16	(5/8")	18	3.20	2.82
65	76.1*)	185	22	22	22	145	52	90	2.9	6	10	122	3	8	M16	(5/8")	18	4.29	3.74
80	88.9*)	200	24	24	24	160	58	105	3.2	8	12	138	3	8	M16	(5/8")	18	5.88	4.75
100	108 (114.3*)	235	24	24	24	190	65	128 134	3.6	8	12	162	3	8	M20	(3/4")	23	7.54	6.52
125	133 (139.7*)	270	26	26	26	220	68	155 162	4.0	8	12	188	3	8	M24	(7/8")	27	10.8	9.07
150	159 (168.3*)	300	28	28	28	250	75	182 192	4.5	10	12	218	3	8	M24	(7/8")	27	14.5	11.8
200	216 (219.1*)	360	30	30	30	310	80	240 244	6.3	10	16	278	3	12	M24	(7/8")	27	22.3	17.0
250	267 (273*)	425	32	32	32	370	88	292 298	7.1	12	18	355	3	12	M27	(1")	30	33.5	24.4
300	381 (323.9*)	485	34	34	34	430	92	345 352	8.0	12	18	395	4	16	M27	(1")	30	46.3	31.2
350	355.6*)	555	38	38	38	490	100	398	8.0	12	20	450	4	16	M30	(1 1/8")	33	68.0	45.0
400	406.4*)	620	40	40	40	550	110	452	8.8	12	20	505	4	16	M33	(1 1/4")	36	89.7	58.7
500	508*)	730	44	44	44	660	125	558	10.0	12	20	615	4	20	M33	(1 1/4")	36	138.0	86.1
600	609.6*)	845	46			770	125	660	11.0	12	20	720	5	20	M36	(1 3/8")	39		101.0
700	711.2*)	960	46			875	125	760	12.5	12	20	820	5	24	M39	(1 1/2")	42		134.0
800	812.8*)	1085	50			990	135	865	14.2	12	22	930	5	24	M45	(1 3/4")	48		183.0
900	914.4*)	1185	54			1090	145	968	16.0	12	24	1030	5	28	M45	(1 3/4")	48		232.0
1000	1016*)	1320	58			1210	155	1070	17.5	16	24	1140	5	28	M52	(2")	56		302.0

Out side diameter of pipe complies with ISO recommendation R64

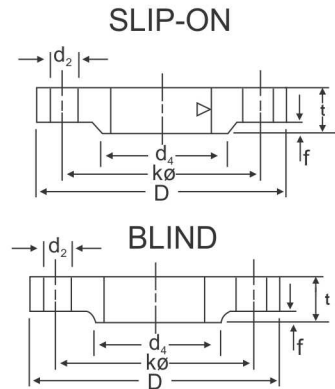
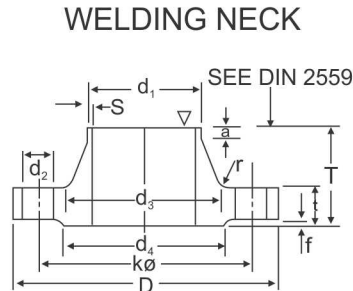


40BAR

DIN 2545 SLIP - ON FLANGES

DIN 2527 BLIND FLANGES

DIN 2635 WELDING NECK FLANGES



Unit : mm

Bore		Common Dimension					Hub				Raise Face		Drilling			Approx Weight (kg)			
Nominal Bore	d ₁	D	t			K	T	d ₃	s	r	a ≈	d ₄	f	No. of Bolt	Dia. of Bolt	d ₂	DIN 2545	DIN 2635	
			Welding neck	slip-on (No-hub)	Blind														
10	14 (17.2*)	90	16	16	16	60	35	25 28	1.8	4	6	40	2	4	M12	(1.2")	14	0.72	0.661
15	20 (21.3*)	95	16	16	16	65	38	30 32	2.0	4	6	45	2	4	M12	(1.2")	14	0.81	0.746
20	25 (26.9*)	105	18	18	18	75	40	38 40	2.3	4	6	58	2	4	M12	(1.2")	14	1.24	1.06
25	30 (33.7*)	115	18	18	18	85	40	42 46	2.6	4	6	68	2	4	M12	(1.2")	14	1.38	1.29
32	38 (42.4*)	140	18	18	18	100	42	52 56	2.6	6	6	78	2	4	M16	(5/8")	18	2.03	1.88
40	44.5 (48.3*)	150	18	18	18	110	45	60 64	2.6	6	7	88	3	4	M16	(5/8")	18	2.35	2.33
50	57 (60.3*)	165	20	20	20	125	48	72 75	2.9	6	8	102	3	4	M16	(5/8")	18	3.20	2.82
65	76.1*)	185	22	22	22	145	52	90	2.9	6	10	122	3	8	M16	(5/8")	18	4.29	3.74
80	88.9*)	200	24	24	24	160	58	105	3.2	8	12	138	3	8	M16	(5/8")	18	5.88	4.75
100	108 (114.3*)	235	24	24	24	190	65	128 134	3.6	8	12	162	3	8	M20	(3/4")	23	7.54	6.52
125	133 (139.7*)	270	26	26	26	220	68	155 162	4.0	8	12	188	3	8	M24	(7/8")	27	10.8	9.07
150	159 (168.3*)	300	28	28	28	250	75	182 192	4.5	10	12	218	3	8	M24	(7/8")	27	14.5	11.80
(175)	(191) (193.7*)	350	32	30	32	295	82	251 218	5.6	10	15	260	3	12	M27	(1")	30	22.1	18.2
200	216 (291.1*)	375	34	34	34	320	88	240 244	6.3	10	16	385	3	12	M27	(1")	30	27.2	21.5
250	267 (273*)	450	38	38	38	385	105	298 306	7.1	12	18	345	3	12	M30	(1 1/8")	33	43.8	34.9
300	318 (323.9*)	515	42	42	42	450	115	352 362	8.0	12	18	410	4	16	M30	(1 1/8")	33	63.3	49.7
350	355.6* 368	580	46	46	46	510	125	408	8.8	12	20	565	4	16	M33	(1 1/4")	36	89.5	68.1
400	406.4*) 419	660	50	50	50	585	135	462	11.0	12	20	535	4	16	M36	(1 1/8")	39	127.0	96.5
500	508*) 521	744	52	52	52	670	140	562	142	12	20	615	4	20	M39	(1 1/8")	42	172.0	117.0

Out side diameter of pipe complies with ISO recommendation R64



APPLICATIONS INDUSTRIES



- Natural Gas
- Water Disposal
- Chemical Engineering
- Cement Industries

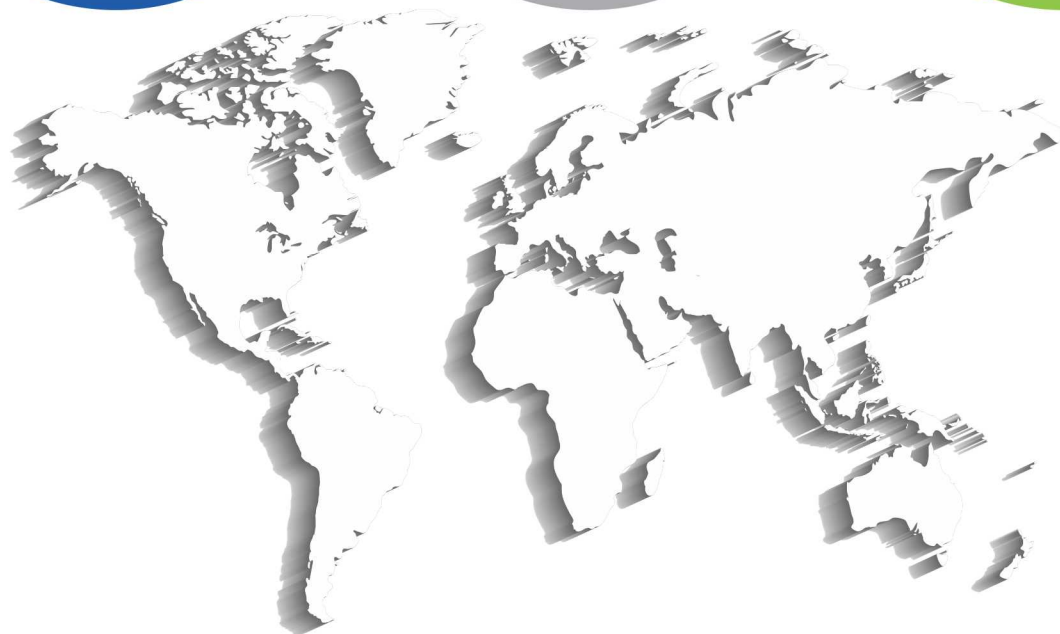


- Refinery Plants
- Oil & Gas
- Power
- Ship Building
- HVAC
- Fire Protection
- Building Services



MAJOR CLIENT

- PETROFAC OMAN
- TULLOW GHANA LTD
- GREENFIELD OFFSHORE SERVICES LTD
- UNITEK ENGINEERING PTE LTD
- TAYRAS BAZ YAĞ RAFINERİ A.S
- KEYSTONE INDONESIA PT.
- ENERGY NUCLEAR EMIRATES CORPORATION
- EMIRATES NATIONAL OIL COMPANY
- ZEECO LTD



VEFLOX

MANUFACTURER & STOCKISTS OF :

Stainless Steel, Carbon Steel Pipe, Flanges &
All Pipe Fitting Product .

FACTORY ADDRESS:

BULLION PIPE AND TUBES LLPNO.06 23A,
C P TANK ROAD MUMBAI 400004

Email : sales@veflox.in Web : www.veflox.in